



Folding door



Complete assembly kit 1

The complete assembly kit 1 consists of the eight separate parts listed below. (Includes mounting material)

Track length: 1,20mtrs

Complete assembly kit 2

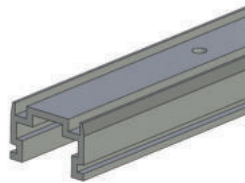
The complete assembly kit 2 consists of the eight separate parts listed below. (Includes mounting material)

Track length: 0,80mtr

Complete assembly kit contents:

Load per door leaf	6 kgs max.
Complete assembly kit for	2 folding door bolts
Track	aluminium
Leaf height	2000 mm max.
Door thickness	18 mm min.
For louvre doors	recommended
For track length	1.20 mtrs
Door width	up to 600 mm max
For opening width	1200 mm max
For track length	0.80 mtrs
Door width	up to 400 mm max.
For opening width	800 mm max.

track 1 pc. 0,80mtr or 1,20mtrs



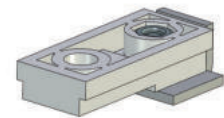
floor bearing 1 pc.



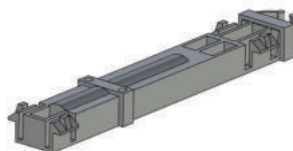
telescopic bearing 2 pc.



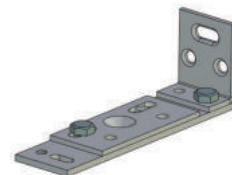
end piece 1 pc.



slide 1 pc.



base plate 1 pc.



middle strike plate 1 pc.



hinges 3 pc.

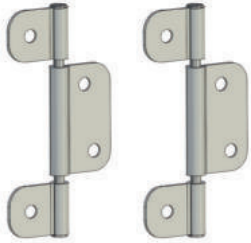


Folding door

6 kg

additional hinges 2 pc.

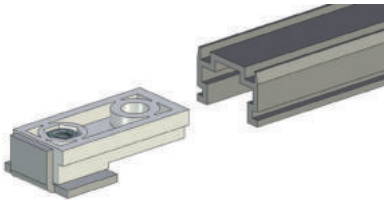
(includes mounting material)



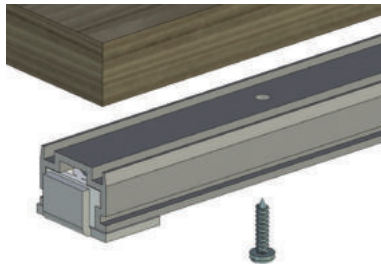
(Not included in the complete assembly kit. Available online only if required)

How to assemble:

1.



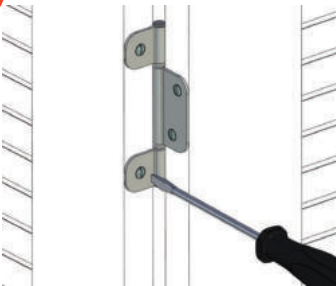
2.



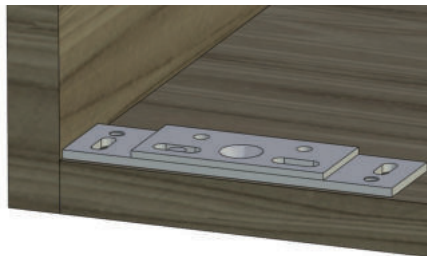
3.



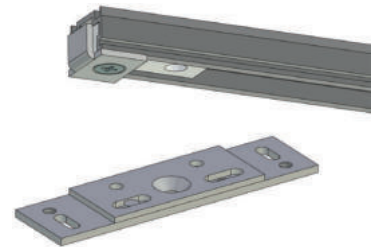
4.



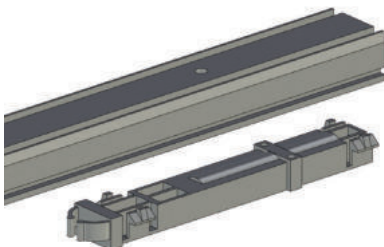
5.



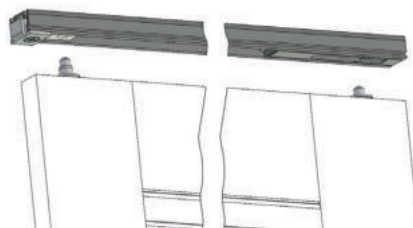
6.



7.



8.



9.

